



PathFindIR II

See Clearly in Total Darkness

PathFindIR II is a powerful thermal night vision system that lets you see road hazards clearly in total darkness, detecting and alerting you to nearby vehicles, people, and animals.

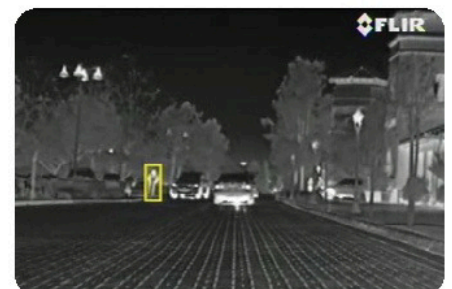
See Farther Than Ever Before

Headlights usually only let you see about 450' straight ahead, but PathFindIR II sees heat not light, so you can see everything in front of you up to four times farther down the road. Now you can see clearly, night and day, in good weather and bad, without being blinded by the glare of oncoming headlights.

And when you can see farther you have more time to react. More time means more options, smoother driving in emergencies and more room to stop. It's the one thing that can help you avoid traffic accidents. With PathFindIR, you can see pedestrians, cars, animals, and virtually any other hazard from farther away, and as they approach the road from either side.

Benefits of PathFindIR II:

- See in total darkness
- Automatic detection and alerts of Pedestrians and Animals
- See pedestrians and vehicles past the glare of oncoming headlights
- See many hazards over four times farther away than with headlights
- See through dust and smoke
- Have more time to react
- Help avoiding accidents and staying safe



Specifications

PathFindIR II

KEY PERFORMANCE CHARACTERISTICS

Thermal Imager

| | |
|---------------|-----------------------------------|
| Sensor Type | 320 x 240 Uncooled Microbolometer |
| Field-of-View | 24° (h) x 18° (v) |
| Spectral Band | 8-14 microns (LWIR) |
| Outputs | NTSC |

Power

| | |
|--------------------|---|
| Power Requirements | 12 VDC |
| Power Consumption | 2 W (6 W w/heater on) 1.8 A max. system current |

Environmental

| | |
|-----------------------------|---|
| Operating Temperature | -40°C to 80°C |
| Weather Resistance (Camera) | Hermetically Sealed, Automotive Qualified |
| Weather Resistance (ECU) | Non-Hermetic; Passenger Compartment mount required |
| Window | High-Impact Resistant Optic w/ Built-in Automatic Heating Element Replaceable Window |

Physical

| | |
|-------------------|---|
| Camera Dimensions | 2.6" x 3.4" x 3.2" (60 x 86 x 82 mm) |
| Camera Weight | 0.6 lb (300 g) |
| ECU Dimensions | 5.8" x 4.3" x 0.9" (148 x 110 x 24 mm) |
| ECU Weight | 0.7 lb (350 g) |

COMPACT, EASY TO INSTALL

PathFindIR II is compact and installs easily into almost any vehicle. All you need is a display with an auxiliary NTSC video input.



ADDITIONAL OPTIONS

An optional Installation Kit is also available, which includes mounting brackets and a compatible monitor.



代理店

株式会社アイ・アール・システム

〒206-0041 東京都多摩市愛宕4-6-20 HP: <http://www.irsystem.com>
TEL: 042-400-0373 FAX: 042-400-0374 メール: office@irsystem.com



SANTA BARBARA

FLIR Systems Inc
70 Castilian Drive
Goleta, CA 93117
PH: +1 805.964.9797
FAX: +1 805.685.2711

PORTLAND

Corporate Headquarters
FLIR Systems, Inc.
27700 SW Parkway Ave.
Wilsonville, OR 97070
PH: +1 866.477.3687
FAX: +1.503.498.3153

Equipment described herein may require US Government authorization for export purposes. Diversion contrary to US law is prohibited. Specifications are subject to change without notice. For the most up-to-date specs, visit our website: www.flir.com. ©2014 FLIR Systems, Inc. All other brand and product names are trademarks of FLIR Systems, Incorporated. 022814

www.flir.com/cvs